

Emergency call 110

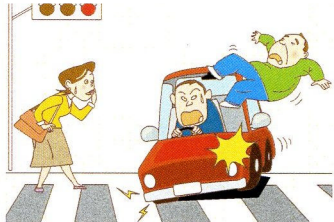


When you are involved in a criminal case or an accident, or when you witness either of them, please make an emergency call to the police.

The phone number is **110**.

Six points for when you report an emergency

1 What happened?
A criminal case or an accident?



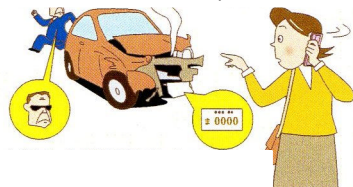
2 When did it happen?



3 Where are you?



4 Did you see the criminal?
Did you see the license plate number of the vehicle?



5



Are there any injured people?
Please describe the scene.

6 Tell the operator your name,
address, phone number, etc.



address, phone number, etc.

○ All the emergency calls from Ibaraki Prefecture are received by the Ibaraki Prefectural Police Headquarters in Mito City.

When you make an emergency call from a cellular phone, please do the following:

- Dial 110 without area code.
- Inform the operator of the names of nearby companies and shops. When you make an emergency call 110 from a cellular phone, your actual location can be tracked to some degree.
- It is prohibited to drive while you are using a cellular phone. Make a phone call AFTER parking your car in a safe place.

For non-emergency demands and consultation, please call
the Police General Consultation Center at #9110

(Phone number : 029-301-9110) or contact **your local police station.**

- When calling the police for consultation, please have a Japanese-speaking person talk on the phone for you if you don't speak Japanese.